

Quick Start Installation Guide For

The Studio Hawk.8

12.15.2008

The Studio Hawk.8 was developed to provide a low-cost solution to monitoring audio and EAS receivers at a studio, and for efficient communication of problems via email, text messaging, and signaling devices. The base system includes Studio Hawk software and hardware to monitor 8 status channels, 8 analog channels, and 8 relays. The Studio Hawk.8 records EAS data (transmitted and received), and can be expanded to monitor up to a total of 6 EAS receivers.

Includes Studio Hawk.8 Software and Hardware

- Monitors 8 status channels, 8 analog channels and 8 relays
- Emails or text messages of alarms
- Multiple contacts for each alarm with delays between text messages
- Dead air report via email
- EAS receiver monitoring

Records EAS data (transmitted and received)

Filters EAS alerts that can be emailed or sent via text message

Monitoring of additional EAS receivers can be added for \$100.00 per receiver (maximum 6 receivers)

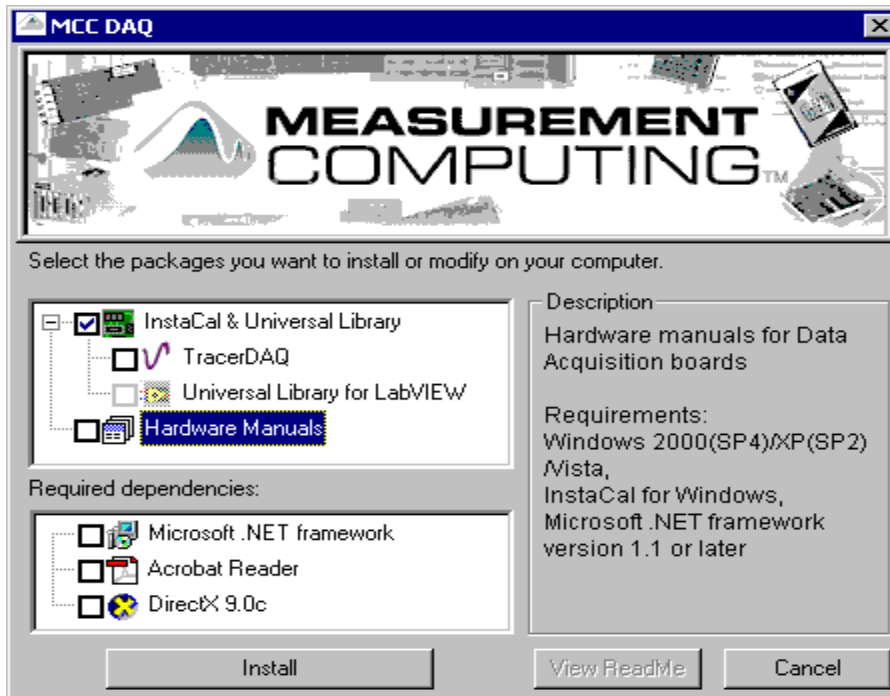


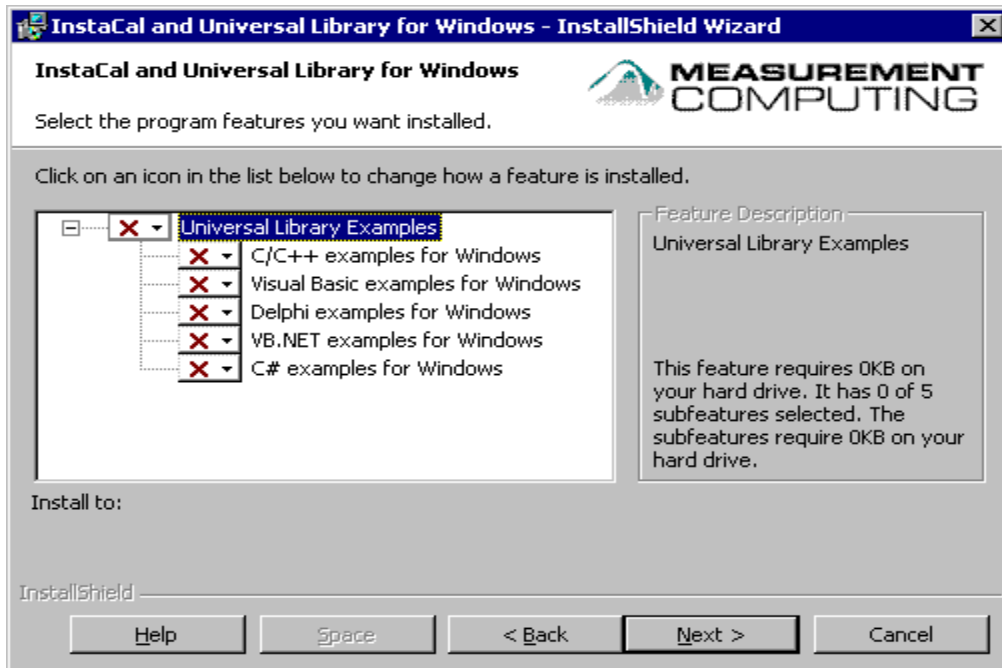
Step 1

Installing the Software & Hardware for the USB-1208LS

Software Installation

Refer to the Quick Start Guide for instructions on installing the software on the Measurement Computing Data Acquisition Software CD. This booklet is available in PDF at www.mccdaq.com/PDFmanuals/DAQ-Software-Quick-Start.pdf.





Hardware Installation

Be sure you are using the latest system software.

Before you connect the USB-1208LS, make sure that you are using the latest versions of the USB drivers.

Before installing the USB-1208LS, download and install the latest Microsoft Windows updates. In particular, when using Windows XP, make sure you have XP Hotfix KB822603 installed. This update is intended to address a serious error in Usbport.sys when you operate a USB device. You can run Windows Update or download the update from www.microsoft.com/downloads/details.aspx?familyid=733dd867-56a0-4956-b7fe-e85b688b7f86&displaylang=en. For more information, refer to the Microsoft Knowledge Base article "Availability of the Windows XP SP1 USB 1.1 and 2.0 update." This article is available at support.microsoft.com/?kbid=822603.

To connect the USB-1208LS to your system, turn your computer on, and connect the USB cable to a USB port on your computer or to an external USB hub that is connected to your computer. The USB cable provides power and communication to the USB-1208LS.

When you connect the USB-1208LS for the first time, a Found New Hardware popup balloon (Windows XP) or dialog (other Windows versions) opens as the USB-1208LS is detected by your computer.

Another Found New Hardware balloon or dialog opens after the first closes that identifies the USB-1208LS as a USB Human Interface Device.

When this balloon or dialog closes, the installation is complete. The LED on the USB-1208LS should flash and then remain lit. This indicates that communication is established

between the USB-1208LS and your computer.

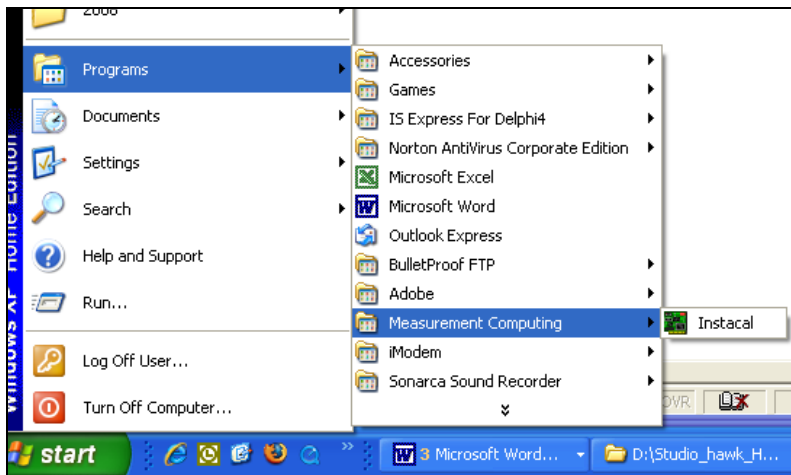
Caution! Do not disconnect any device from the USB bus while the computer is communicating with the USB-1208LS, or you may lose data and/or your ability to communicate with the USB-1208LS.

If the LED turns off

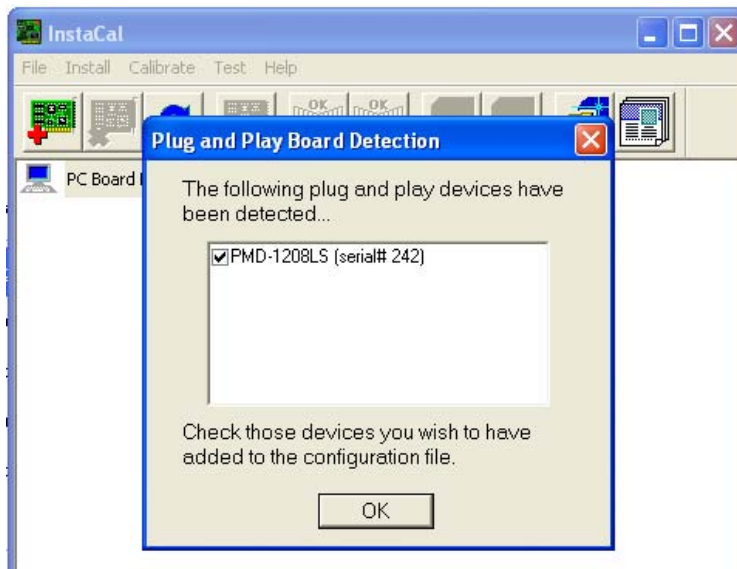
If the LED is illuminated but then turns off, the computer has lost communication with the USB-1208LS. To restore communication, disconnect the USB cable from the computer, and then reconnect it. This should restore communication, and the LED should turn back on.

Step 2

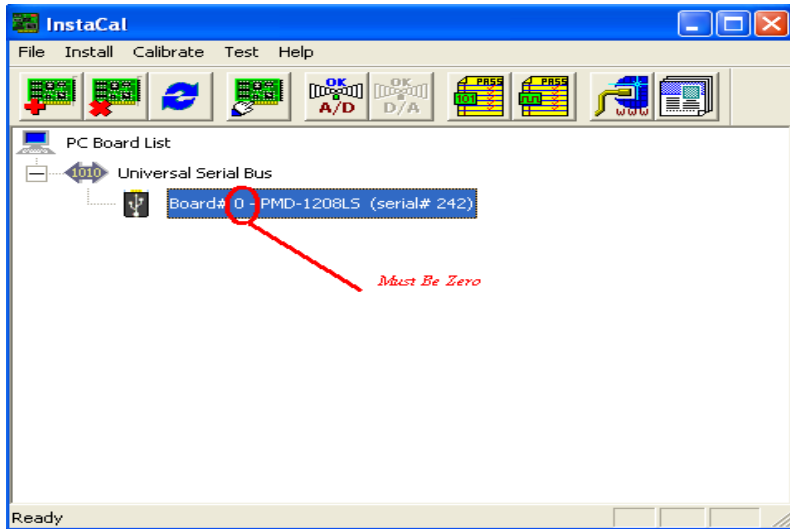
Setting the 1208LS Board Number



1. Go Start > Programs > Measurement Computing > Instacal



2. Click Ok



3. You should see the above window and the board number should be zero. If not, then right click on board number and a drop down menu will allow you to change the board number. From the menu bar select File and Exit.

Step 3

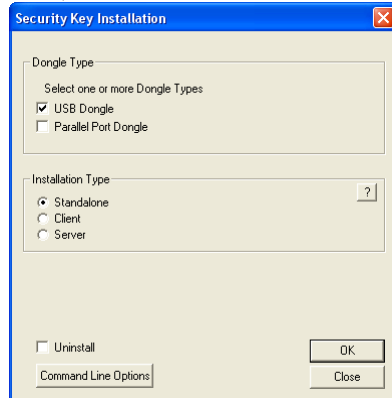
Installing The Studio Hawk.8

1. Place the supplied Studio Hawk installation CD in the CD/DVD reader.
2. The CD will likely “Auto play” and the installation should begin. If not, use Windows Explorer to find the Setup.exe program on the CD and double-click on it.
3. The installation program will walk you through the installation procedure.
4. After completing the installation you may be prompted to reboot your computer. If so, please close any open windows on your desktop, and restart your computer before continuing.

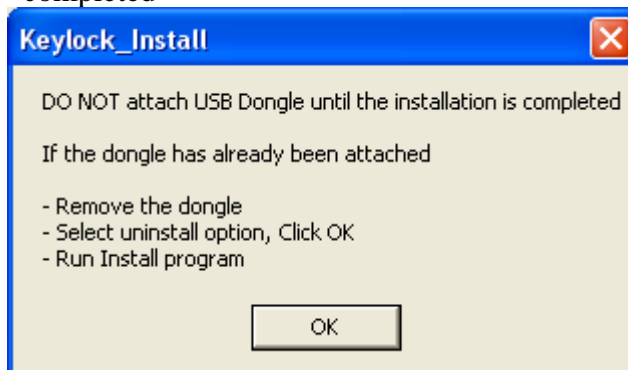
Step 4

Installing Drivers for KEY-LOK

1. Launch **The Studio Hawk.8** from the desktop Icon.
2. The first time you launch **The Studio Hawk.8**, you will get a dialog box that will say, “No KEY-LOK or the wrong device is attached.” This is because the driver has not been installed for the Dongle. Under The **Studio Hawk** “HELP” menu, select “Install KEY-LOK Driver”



3. Select USB Dongle and Standalone
4. You will see a dialog box “DO NOT attach USB Dongle until installation is completed”



5. If you have installed the Dongle, remove it now.
6. At the lower right press “OK”
7. The next dialog box will say “The Dongle has been installed. Press ok and exit”
8. Install your Key-LOK Dongle in any USB port
9. Windows will install a driver for the Dongle

Step 5

Connect Audio

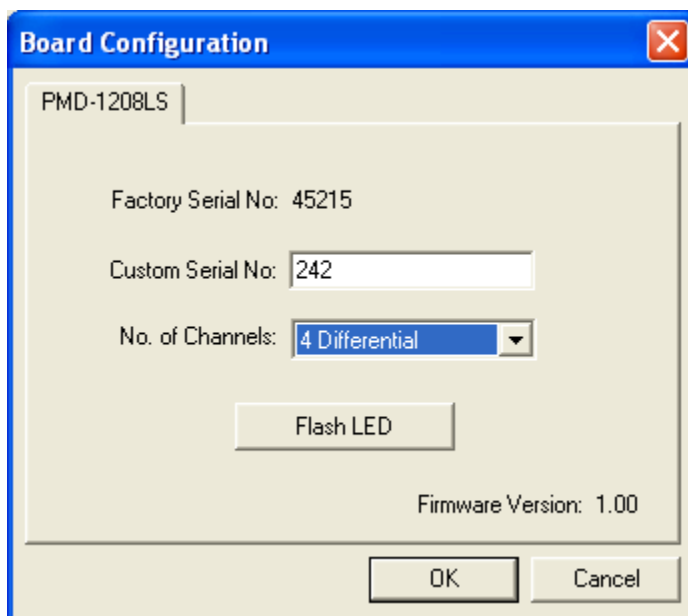
There are two modes of hardware operation for The Studio Hawk.8

1. 4-Channel Balanced Audio or
2. 8-Channel Unbalanced Audio

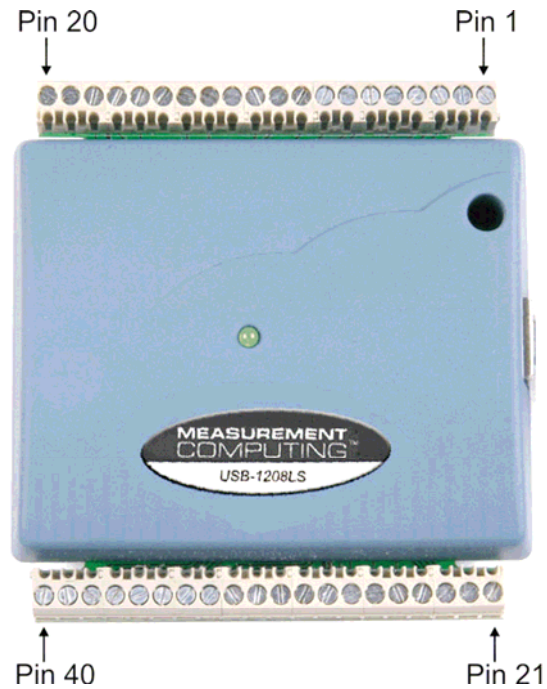
To select the mode of operation from the desk top select

Start > Programs > Measurement Computing > Instacal

1. Select board zero
2. Right click
3. Select configure



For 4 channel select "4 Differential"
For 8 channel select "8 Single Ended"
Click OK and close Instacal



4-channel Balanced Audio

Pin	Signal Name	Pin	Signal Name
1	Ch 1 +	21	Relay 0 Out Bit 0
2	Ch 1 -	22	Relay 1 Out Bit 1
3	Ch 1 GND	23	Relay 2 Out Bit 2
4	Ch 2 +	24	Relay 3 Out Bit 3
5	Ch 2 -	25	Relay 4 Out Bit 4
6	Ch 2 GND	26	Relay 5 Out Bit 5
7	Ch 3 +	27	Relay 6 Out Bit 6
8	Ch 3 -	28	Relay 7 Out Bit 7
9	Ch 3 GND	29	GND
10	Ch 4 +	30	PC+5V
11	Ch 4 -	31	GND
12	Ch 4 GND	32	Status 1 input
13	Not Used	33	Status 2 input
14	Not Used	34	Status 3 input
15	GND Not Used	35	Status 4 input
16	CAL	36	Status 5 input
17	GND	37	Status 6 input
18	Not Used	38	Status 7 input
19	GND	39	Status 8 input
20	Not Used	40	GND

8-channel Unbalanced Audio

Pin	Signal Name	Pin	Signal Name
1	Ch 1 +	21	Relay 0 Out Bit 0
2	Ch 2 +	22	Relay 1 Out Bit 1
3	Ch 1,2 GND	23	Relay 2 Out Bit 2
4	Ch 3 +	24	Relay 3 Out Bit 3
5	Ch 4 +	25	Relay 4 Out Bit 4
6	Ch 3,4 GND	26	Relay 5 Out Bit 5
7	Ch 5 +	27	Relay 6 Out Bit 6
8	Ch 6 +	28	Relay 7 Out Bit 7
9	Ch 5,6 GND	29	GND
10	Ch 7 +	30	PC+5V
11	Ch 8 +	31	GND
12	Ch 7,8 GND	32	Status 1 input
13	Not Used	33	Status 2 input
14	Not Used	34	Status 3 input
15	GND Not Used	35	Status 4 input
16	CAL	36	Status 5 input
17	GND	37	Status 6 input
18	Not Used	38	Status 7 input
19	GND	39	Status 8 input
20	Not Used	40	GND

Notes.

1. DO NOT CONNECT ANY RELAY DIRECTLY TO THE RELAY OUTPUT OF THE 1208LS PINS 21-28 THAT DRAW OVER 2.5 ma. You must use buffers to drive relays.
2. Audio inputs need to be terminated. If you are bridging another device that has termination then you are ok. If not you need to place a termination resistor across the input. Most broadcast audio equipment has an

output impedance is 600 ohm. Most consumer audio equipment has an output impedance of 10k. Connect resistors as listed below.

3. The audio connected to the 1208SL is sampled and then converted to an approximate DC value. The meters displayed on the main page of The Studio Hawk are an approximation of the audio input. It is used to determine if the station's audio source is present or not. The values displayed are not an accurate representation of the audio's DB level.

Connect a resistor between the pins listed below. Most common values are 600 ohms for broadcast equipment and 10k ohms for unbalanced consumer grade equipment. Only install resistors if the equipment is not terminated by another piece of equipment.

4 Channel Mode	Pins
1	Pin 1 to Pin 2
2	Pin 4 to Pin 5
3	Pin 7 to Pin 8
4	Pin 10 to Pin 11

8 Channel Mode	
1	Pin 1 to Pin 3
2	Pin 2 to Pin 3
3	Pin 4 to Pin 6
4	Pin 5 to Pin 6
5	Pin 7 to Pin 9
6	Pin 8 to Pin 9
7	Pin 10 to Pin 12
8	Pin 11 to Pin 12

Final Step

Configuring The Studio Hawk.8

For detailed information on the configuration of The Studio Hawk.8 please refer to the Users Manual.

For support, please Email
support@IntrinsicNet.com

Or Call

662.324.2769 between 9 AM and 4 PM (Central time) weekdays