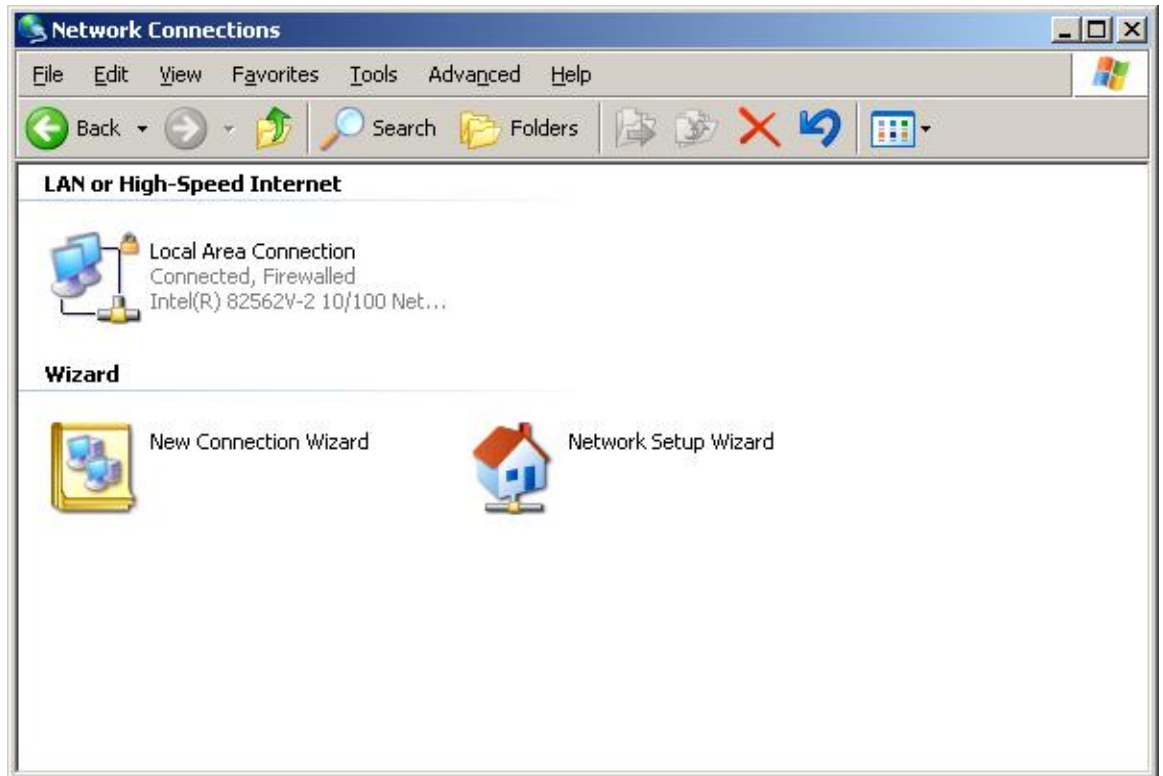


## Creating an Incoming Dial-up Connection

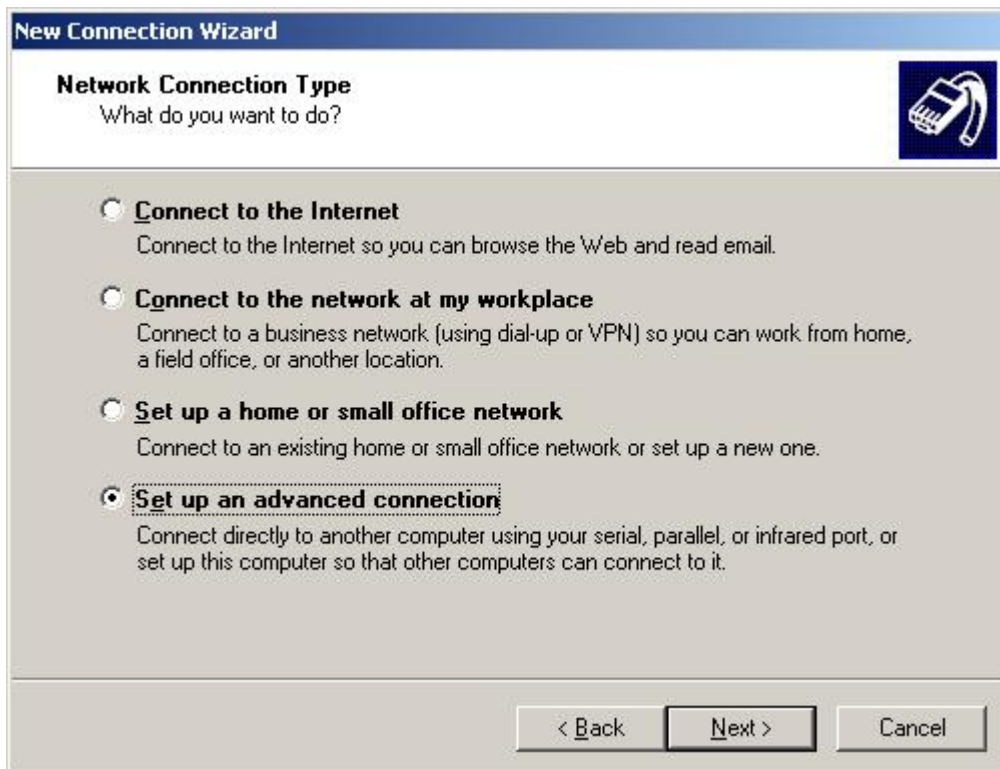
1. Open *Control Panel* by opening the start menu and clicking *Control Panel*. For Windows 2000 users *Control Panel* is under *Settings* on the *Start Menu*.
2. From the 'Control Panel' double click the Network Connections icon.
3. From the *Network Connections* page double click *New Connection Wizard*.



4. When the Wizard pops up click *Next*.



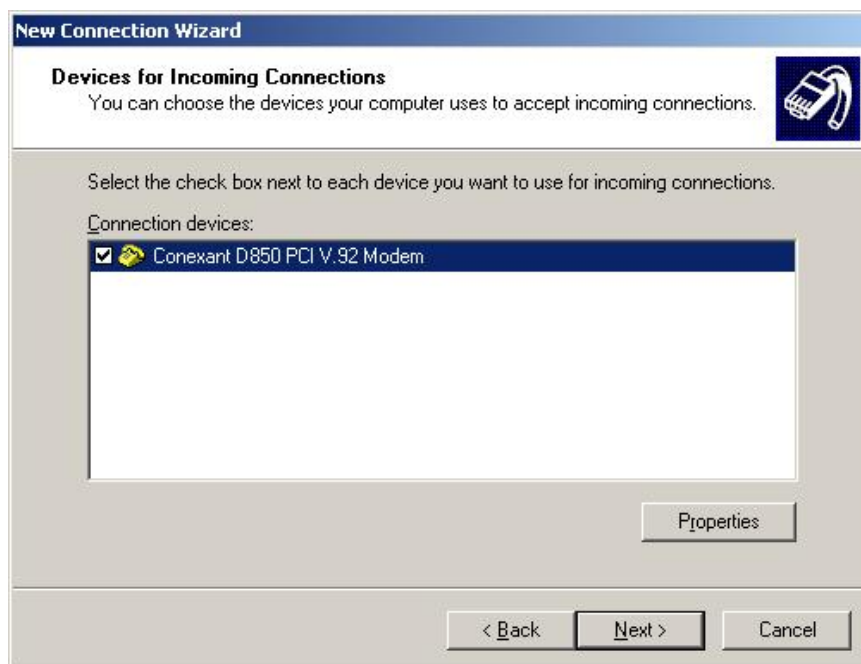
5. Select *Set up an advanced connection* and click next.



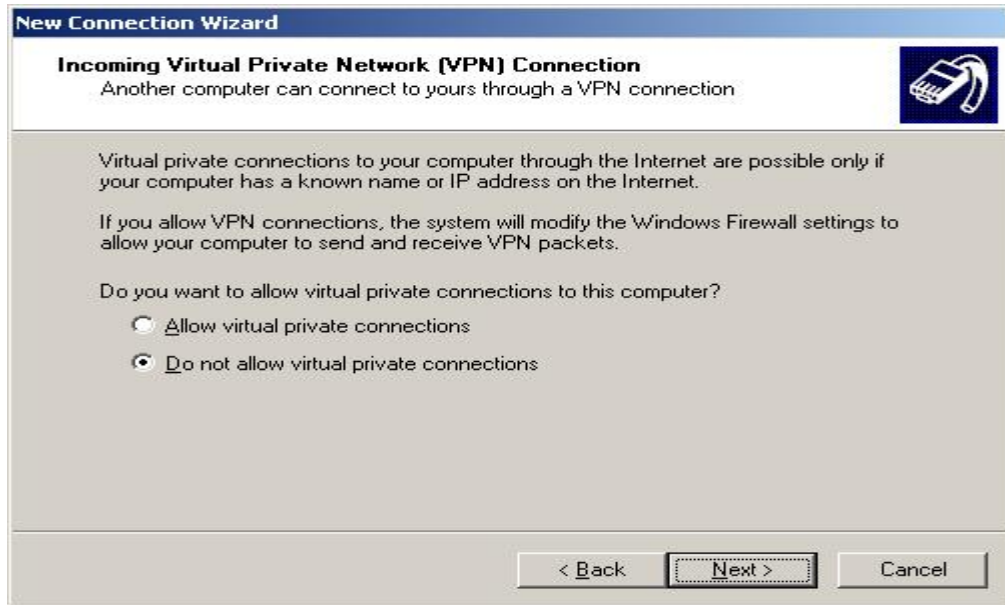
6. Select Accept incoming connections and click next.



7. Select the Modem you intend to use for incoming connections by check the box beside it and then click Next. (This should not be the same modem you use for paging or text messaging.)



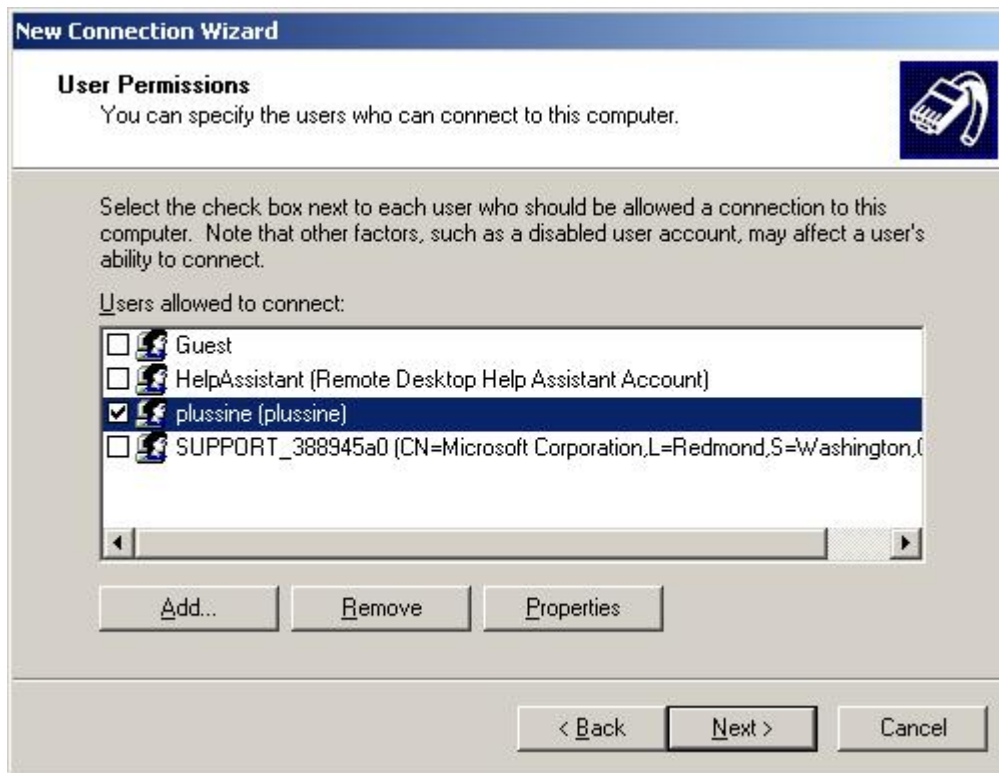
8. Select *Do not allow virtual private connections* and click next.



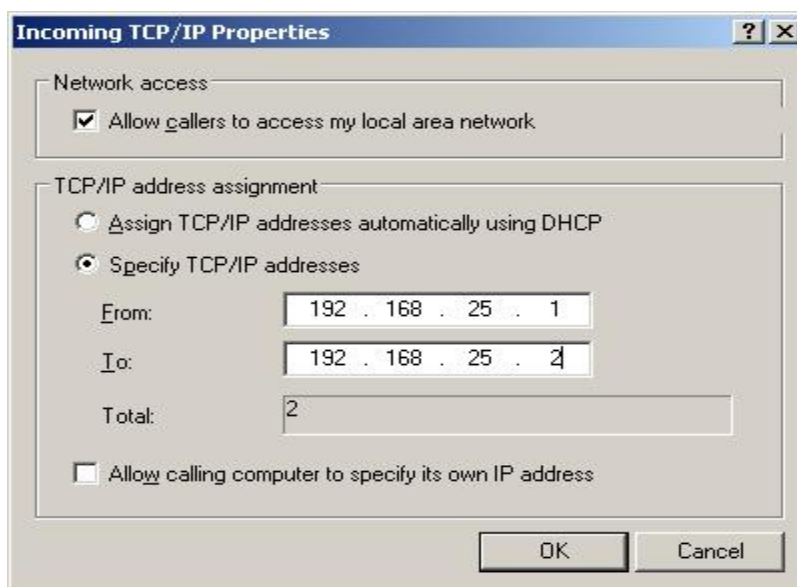
9. On this page you may allow existing users remote access or create a new user. Make sure whichever user you want to use to remotely access the machine you check the box beside the user name on the list. Make a sure to make a note of the user name and password. You will need it when you set up the dial up connection on your home, office, or laptop computer. Click *Next* hen your done.



10. Highlight Internet Protocol (TCP/IP) and hit properties.



11. Specify an IP address range. A range of two numbers will suffice for most setups. Pick something that won't conflict with you home or office network or the address scheme at your transmitter sight if you have a network there. This address is just for your dial up adapter, and will not be the same as your network adapter. If you have any doubts check with your System Administrator. When you're done hit OK then Next.



12. Click finish and you're done setting up your incoming dial up connection.

